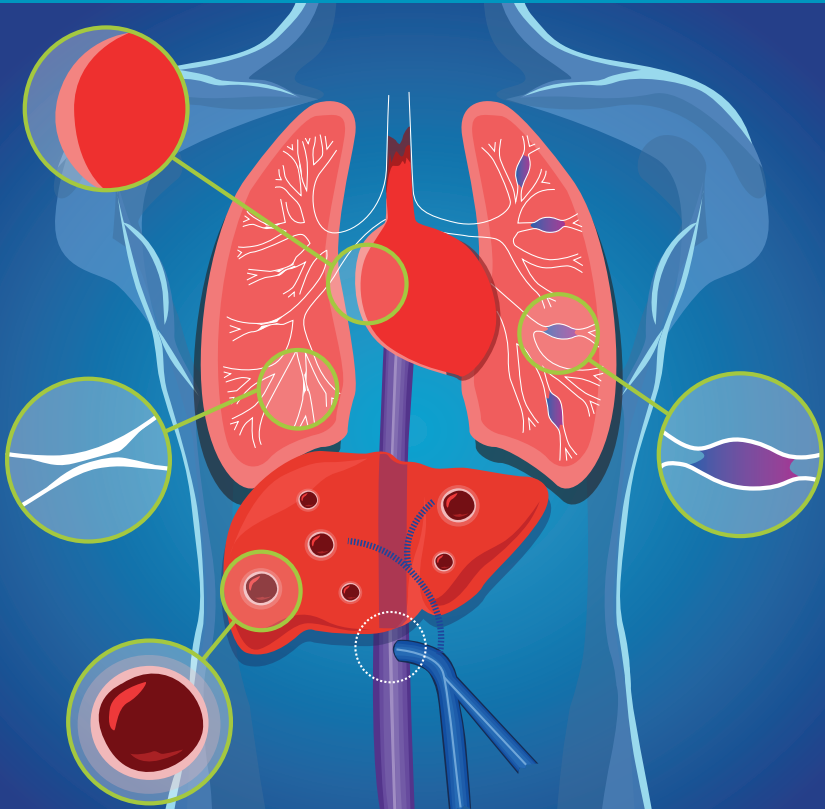


# TAKING CPSS TO THE NEXT LEVEL 2<sup>ND</sup> MEETING OF EXPERTS

**July 1-2, 2022**

Onsite & online congress

Centre Médical Universitaire (CMU), Geneva



**HUG** Hôpitaux  
Universitaires  
Genève

SWISS PEDIATRIC  
LIVER CENTER

**IRCPSS**  
International  
Reference  
Center for  
Pediatric Cholestasis  
Syndromes

**ESPGHAN**

EUROPEAN JOINT PROGRAMME  
**RARE DISEASES**



**SALS** Swiss Association for  
the Study of the Liver

European  
Reference  
Network

Hepatological Diseases  
(ERN RARE-LIVER)

**VALDIG**  
VASCULAR LIVER DISEASE GROUP

# Taking CPSS to the next level

## 2<sup>nd</sup> meeting of experts

---

### Context

The management of congenital portosystemic shunts (CPSS) is challenging.

### Aims

To improve patient care by addressing controversies in CPSS management focusing on liver nodules, portopulmonary hypertension (POPH), endocrine abnormalities, and the challenges of recommending shunt closure.

### Public

Professionals (physicians, scientists, patient organisations, allied health professionals)

### Language

All presentations will be in English.

### Type of congress

Onsite and online (hybrid meeting)

### Organizing committee

Dr. Anna Baiges, Prof. Maurice Beghetti, Dr. Ana Maria Calinescu-Tuleasca, Prof. Andrea De Gottardi, Prof. Stéphanie Franchi-Abella, Prof. Florent Guérin, Dr. Solène Le Cam, Dr. Josefina Martinelli, Prof. Valérie McLin, Dr. Aurélie Plessier, Prof. Tudor Pop, Prof. Laurent Savale, Prof. Hubert Van der Doef, Dr. Julie Wacker, Prof. Barbara Wildhaber

### Scientific committee

Prof. Maurice Beghetti, Dr. Lorenzo D'Antiga, Prof. Dominique Debray, Prof. Stéphanie Franchi-Abella, Prof. Emmanuel Gonzales, Prof. Florent Guérin, Dr. Virginie Lambert, Dr. José Lipsich, Prof. Periklis Makrythanasis, Prof. Valérie McLin, Prof. Laurent Savale, Prof. Marie-Victoire Senat, Dr. Frank Van Steenbeek, Prof. Barbara Wildhaber

# Program

Friday July 1, 2022

---

## 8:30 Welcome & Introduction

[Prof. Stéphanie Franchi-Abella](#), Pediatric radiology, Paris-Saclay University, Hôpital Bicêtre, Hôpitaux Paris-Saclay APHP, France; [Prof. Valérie McLin](#), Swiss Pediatric Liver Center, Gastroenterology, hepatology and pediatric nutrition unit, University Hospitals of Geneva, Geneva, Switzerland

## I. Refresher

### 8:35 Present day understanding of presentation, diagnosis and management

[Prof. Emmanuel Gonzales](#), Pediatric Hepatology and Liver Transplantation Unit, Hôpital Bicêtre, Reference Centre for Pediatric Liver Diseases and Folfoie-DHU Hepatinov, Assistance Publique-Hôpitaux de Paris and INSERM UMR-S 1174, Université Paris-Sud, Paris-Saclay, Le Kremlin-Bicêtre, Paris, France

### 8:55 Survey on current practices

[Mehdi Gadiri](#), Faculty of Medicine, University of Geneva, Geneva, Switzerland; [Dr. Josefina Martinelli](#), Swiss Pediatric Liver Center, Gastroenterology, hepatology and pediatric nutrition, University Hospitals of Geneva, Geneva, Switzerland

### 9:05 Update on the International Registry of Congenital Porto-Systemic Shunts (IRCPSS)

[Simona Korff PhD](#), Swiss Pediatric Liver Center, Gastroenterology, hepatology and pediatric nutrition unit, University Hospitals of Geneva, Geneva, Switzerland

## II. Personalizing Care

### 9:15 Prenatal diagnosis and neonatal management: "wait and see" versus invasive management

[Dr. Grégoire Dumery](#), Gynécologie-Obstétrique, Hôpital Bicêtre, Paris, France; [Prof. Stéphanie Franchi-Abella](#), Pediatric Radiology, Paris-Saclay University, Hôpital Bicêtre, Hôpitaux Paris-Saclay APHP, Paris, France

### 9:35 Clinical cases

tbd

### 9:45 Coffee break

Friday July 1, 2022

---

### III. Liver Nodules

*Moderators: [Dr. Anne-Laure Rougemont](#), Swiss Pediatric Liver Center, Pediatric pathology, University Hospitals of Geneva, Geneva, Switzerland; [Prof. Barbara Wildhaber](#), Swiss Pediatric Liver Center, Pediatric surgery, University Hospitals of Geneva, Geneva, Switzerland*

**10:15 Imaging characteristics**

[Prof. Valérie Vilgrain](#), Radiology, Hôpital Beaujon, Paris, France

**10:35 Histopathology and molecular biology/role of biopsy**

[Prof. Alberto Quaglia](#), Department of Cellular Pathology, Royal Free London NHS Foundation Trust/UCL Cancer Centre, London, England

**Whom to resect:**

**11:05 French pediatric experience**

[Prof. Florent Guérin](#), Pediatric Surgery Unit, Université Paris-Saclay, Assistance Publique Hôpitaux de Paris, Hôpital Bicêtre, Le Kremlin Bicêtre, Paris, France

**11:15 Japanese pediatric experience**

[Dr. Hajime Uchida](#), Organ Transplantation Center, National Center for Child Health and Development, Tokyo, Japan

**11:25 Experience in adults**

[Prof. Nigel Heaton](#), Professor of Transplantation, Consultant in adult and pediatric liver transplantation and HPB surgery, Kings College Hospital, London, England

**11:35 Discussion**

**12:15 Lunch**

## IV. Portopulmonary Hypertension

Moderators: *Prof. Maurice Beghetti*, Pediatric cardiology, University Hospitals of Geneva, Geneva, Switzerland; *Prof. Laurent Savale*, Department of Respiratory and Intensive Care Medicine, Pulmonary Hypertension National Referral Centre, Hôpital Bicêtre, Le Kremlin Bicêtre, Paris, France

### 13:30 Pathophysiology of pulmonary vascular diseases induced by porto-systemic shunts

*Prof. Laurent Savale*, Department of Respiratory and Intensive Care Medicine, Pulmonary Hypertension National Referral Centre, Hôpital Bicêtre, Le Kremlin Bicêtre, Paris, France

### 13:50 Role of BMP9 in the pathophysiology of hepatopulmonary syndrome

*Fabien Robert*, INSERM UMR\_S 999, Pulmonary Hypertension: Pathophysiology and Novel Therapies, Hôpital Marie Lannelongue, Le Plessis Robinson, France

### 14:00 Cardiovascular disorders and CPSS

*Dr. Virginie Lambert*, Institut mutualiste Montsouris, Paris, France; APHP, Hôpital Bicêtre, Le Kremlin Bicêtre, Paris, France

### 14:20 How to screen for and confirm the diagnosis of POPH?

*Dr. Sebastien Hascoet*, Pediatric and Adult Congenital Heart Diseases, Hôpital Marie Lannelongue, Le Plessis-Robinson, France

### 14:40 Who, when and how to treat POPH

*Dr. Julie Wacker*, Pediatric cardiology unit, University Hospitals of Geneva, Geneva, Switzerland; Centre Universitaire Romand de Cardiologie et Chirurgie Cardiaque Pédiatrique, University of Geneva and Lausanne, Switzerland

### 15:00 Liver or lung transplantation. Which indications for which patients?

*Prof. Olivier Sitbon*, Department of Respiratory and Intensive Care Medicine, Pulmonary Hypertension National Referral Centre, Hôpital Bicêtre, Le Kremlin Bicêtre, Paris, France

**15:20 Two clinical cases:**

**A case of POPH worsening after CPSS closure**

[Dr. Audrey Baron](#), Department of Respiratory and Intensive Care Medicine, Pulmonary Hypertension National Referral Centre, Hôpital Bicêtre, Le Kremlin Bicêtre, Paris, France

**A case of POPH improvement after CPSS closure**

[Dr. Julie Wacker](#), Pediatric cardiology unit, University Hospitals of Geneva, Geneva, Switzerland; Centre Universitaire Romand de Cardiologie et Chirurgie Cardiaque Pédiatrique, University of Geneva and Lausanne, Switzerland

**15:30 Discussion**

**16:00 Coffee break**

## **V. Controversies Prior to Closure**

*Moderators: [Dr. Valeria Casotti](#), Ospedale Pediatric Hepatology, Gastroenterology and Transplant Centre, ASST Ospedale Papa Giovanni XXIII, Bergamo, Italy; [Prof. Valérie McLin](#), Swiss Pediatric Liver Center, Gastroenterology, hepatology and pediatric nutrition unit, University Hospitals of Geneva, Geneva, Switzerland*

**16:30 Role of liver biopsy: debate**

[Prof. Dominique Debray](#), Unité d'Hépatologie pédiatrique et transplantation, Centre de référence de l'AVB et cholestases génétiques, Centre de compétences des hépatites auto-immunes, cholangites sclérosantes, maladies vasculaires du foie et maladie de Wilson, Hôpital Necker, Paris, France

**16:40 Genetics: toward the development of a shunt-ome**

[Prof. Periklis Makrythanasis](#), Assistant Professor, Medical School, National and Kapodistrian University of Athens, Athens, Greece; [Dr. Frank G. Van Steenbeek PhD](#), Assistant Professor, Utrecht University, faculty of veterinary medicine, The Netherlands

**17:10 Ethical aspects of preemptive closure and patient/proxies perspectives**

[Dr. Nicolas Foureur](#), médecin responsable du Centre d'éthique clinique de l'AP-HP, Hôpital Cochin, Paris, France

**18:10 Discussion**

**20:00 Dinner at Restaurant Café Papon**

Rue Henri-Fazy 1, 1204 Geneva

# Program

Saturday July 2, 2022

---

## VI. Endocrinology of the Liver and Consequences of Portosystemic Bypass in Children and Adults

*Moderators: Dr. Hubert van der Doef, MD PhD, Pediatric hepatologist and gastroenterologist, University Medical Center Groningen, Groningen, the Netherlands; tbd*

**8:30 Overgrowth and CPSS**

Dr. Atessa Bahadori, DFEA, University Hospitals of Geneva, Geneva, Switzerland

**8:45 Hypoglycemia, hyperinsulinism and CPSS**

Dr. Mirjam van Albada, endocrinologist UMCG, Groningen, the Netherlands

**9:00 Adrenal insufficiency and CPSS**

Dr. Moinak Sen Sarma, Pediatric gastroenterology, Sanjay Gandhi Postgraduate Institute of Medical Sciences, Lucknow, India

**9:15 Hypothyroidism and CPSS**

Dr. Nitash Zwaveling, endocrinologist Amsterdam UMC, Amsterdam, the Netherlands

**9:30 Clinical case of amenorrhea and hyperandrogenism**

Dr. Jai Patel, interventional radiologist, Leeds Teaching Hospitals NHS Trust, Leeds, United Kingdom

**9:35 Discussion**

**10:30 Coffee break**

Saturday July 2, 2022

---

## VII. Controversies in the Management of CPSS

*Moderators: Prof. Nigel Heaton, Professor of Transplantation, Consultant in adult and pediatric liver transplantation and HPB surgery, Kings College Hospital, London, England; Dr. José Ernesto Lipsich, Imaging Department, National Children's Hospital Juan P. Garrahan, Buenos Aires, Argentina*

**11:00 Preoperative imaging workup**

[Dr. Hajime Uchida](#), Organ Transplantation Center, National Center for Child Health and Development, Tokyo, Japan

**11:20 Contraindications to closure**

[Dr. Riccardo A. Superina](#), Transplant and Hepatobiliary Surgery, Robert E. Schneider Chair in Transplantation Ann & Robert H. Lurie Children's Hospital of Chicago, Chicago, United States

**11:40 Timing and preemptive management**

[Prof. Jean De Ville de Goyet](#), Pediatric abdominal surgery and liver transplantation, ISMETT, Palermo, Italy

**12:00 Complications of closure and their management**

[Dr. Paolo Marra](#), Department of Radiology, Papa Giovanni XXIII Hospital, Bergamo, Italy - School of Medicine and Surgery, University of Milano-Bicocca, Milano, Italy

**Outcomes following closure:**

**12:20 Predictors of post-closure portal hypertension**

[Prof. Stéphanie Franchi-Abella](#), Pediatric radiology, Paris-Saclay University, Hôpital Bicêtre, Hôpitaux Paris-Saclay APHP, Paris, France

**12:35 Long term follow up after symptomatic/asymptomatic shunt closure (children/adults)**

[Dr. Anna Baiges](#), Hepatology, Hospital Clínic de Barcelona, Barcelona, Spain

**12:55 Lunch or lunch box sessions**



## VIII. Challenging Case Presentations and Discussion

**13:45** Moderators: *Dr. Anna Baiges*, Hepatology, Hospital Clínic de Barcelona, Barcelona, Spain; *Dr. Ana Maria Calinescu-Tuleasca*, Swiss Pediatric Liver Center, Pediatric Surgery, University Hospitals of Geneva, Geneva, Switzerland; *Dr. Solène Le Cam*, Pediatric radiology, Hôpital Bicêtre, Le Kremlin Bicêtre, Paris, France; *Dr. Josefina Martinelli*, Swiss Pediatric Liver Center, Gastroenterology, hepatology and pediatric nutrition unit, University Hospitals of Geneva, Geneva, Switzerland; *Dr. Julie Wacker*, Pediatric cardiology unit, University Hospitals of Geneva, Geneva, Switzerland; Centre Universitaire Romand de Cardiologie et Chirurgie Cardiaque Pédiatrique, University of Geneva and Lausanne, Switzerland

## IX. Wrap Up

**16:00** *Prof. Valérie McLin*, Swiss Pediatric Liver Center, Gastroenterology, hepatology and pediatric nutrition unit, University Hospitals of Geneva, Geneva, Switzerland; *Prof. Barbara Wildhaber*, Swiss Pediatric Liver Center, Pediatric surgery, University Hospitals of Geneva, Geneva, Switzerland

# Accommodation

---

Please find below a list of hotels with negotiated discounted room rates. They are all located in downtown Geneva and accessible by public transport.

All reservations come with a complementary public transport card for the duration of your stay.

## Fassbind Hotels

### Hotel Cornavin \*\*\*\*

Bd James-Fazy 23, 1201 Genève

☎ +41 22 716 12 12, Email: [cornavin@fhotels.ch](mailto:cornavin@fhotels.ch)

➤ [www.fassbindhotels.com](http://www.fassbindhotels.com)

### Hotel Cristal (Design) \*\*\*

Rue Pradier 4, 1201 Genève

☎ +41 22 716 12 21, Email: [cristal@fhotels.ch](mailto:cristal@fhotels.ch)

➤ <https://fassbindhotels.ch/fr/hotel/cristal-design-geneve/>

### Hotel Strasbourg \*\*\*

Rue Pradier 10, 1201 Genève

☎ +41 22 906 58 00, Email: [strasbourg@fhotels.ch](mailto:strasbourg@fhotels.ch)

➤ <https://fassbindhotels.ch/fr/hotel/strasbourg/>

## Reservation procedure for the Hotel Cornavin, Hotel Cristal or Hotel Strasbourg:

- ▶ Click on the booking link: ➤ [www.fassbindhotels.ch](http://www.fassbindhotels.ch) (or contact directly the reception of the hotel of your choice and mention the promotional code "PEACE")
- ▶ Select the hotel of your choice
- ▶ Mention the promotional code "PEACE"
- ▶ Finalize your booking

## Additional informations:

- ▶ Room rates:
  - Double room, 1 person: between CHF 160 - 210.- breakfast incl.
  - Double room, 2 people: between CHF 180 - 230.- breakfast incl.
- ▶ No booking deadline

## Hotel Suisse

### Hotel Suisse \*\*\*

Place de Cornavin 10, 1201 Genève

📞 +41 22 732 66 30, Email: reservation@hotel-suisse.ch

👉 [www.hotel-suisse.ch/](http://www.hotel-suisse.ch/)

#### **Reservation procedure for the Hotel Suisse:**

- ▶ Book directly by email mentioning "SYMPOSIUM":  
reservation@hotel-suisse.ch

#### **Additional informations:**

- ▶ Room rates:
  - Single room: CHF 125.- breakfast incl.
  - Double room: CHF 165.- breakfast incl.
- ▶ Booking deadline: May 15, 2022

## Hotel Ibis

### Hotel Ibis Centre Lac\*\*\*

Rue de Berne 26, 1201 Genève

📞 +41 22 849 202 20, Email: H9577@accor.com

👉 [https://all.accor.com/hotel/9577/index.fr.shtml?utm\\_campaign=seo+maps&utm\\_medium=seo+maps&utm\\_source=google+Maps](https://all.accor.com/hotel/9577/index.fr.shtml?utm_campaign=seo+maps&utm_medium=seo+maps&utm_source=google+Maps)

#### **Reservation procedure for the Hotel Suisse:**

- ▶ Book directly by email mentioning the promotional code "9577B00050":  
H9577@accor.com

#### **Additional informations:**

- ▶ Room rates:
  - Double room, 1 person: CHF 160.- breakfast incl.
  - Double room, 2 people: CHF 177.- breakfast incl.
- ▶ 35 rooms are available with discount. First come, first served.
- ▶ Booking deadline: May 15, 2022

# Getting around

---

## If you arrive by plane

### Geneva Airport - Aéroport international de Geneve (Cointrin)

The airport is located about 20 minutes by public transport from the city center.

TPG public transport buses serve the airport at a frequency of 8-15 minutes during peak hours. Buses no. 5 and 10 take you directly downtown.

The taxi station is located on the Arrivals level (taxi rates vary from 35 CHF to 45 CHF and depend on the density of traffic, the time and the number of passengers).

➤ [www.gva.ch/en](http://www.gva.ch/en)

## If you arrive by train

### Geneva Cornavin railway station - Gare Cornavin

➤ [www.sbb.ch/en/station-services/at-the-station/railway-stations/geneva-station.html](http://www.sbb.ch/en/station-services/at-the-station/railway-stations/geneva-station.html)

## Getting around Geneva – Public Transport

### Transports Publics Genevois (TPG)

Geneva Public Transport network is named UNIRESO. It is an interconnected system of trams, buses (TPG), mouettes (yellow transport boats) and trains (CFF) in Geneva.

➤ [www.tpg.ch/fr](http://www.tpg.ch/fr)

## Other links

Tourist office: ➤ [www.geneve.com/en](http://www.geneve.com/en)

# Practical information

---

## Venue

Centre Médical Universitaire (CMU),  
Auditorium Alex-F. Müller (A250)  
Avenue de Champel 7, 1205 Genève

## Registration and information

We kindly ask you to register online at your earliest convenience but no later than **30 April, 2022** on

➔ [www.hug.ch/en/symposium-taking-cpps-to-next-level](http://www.hug.ch/en/symposium-taking-cpps-to-next-level)

## Contact

For further information please contact Cristina Späni Marguet:  
[cristina.spanimarguet@hcuge.ch](mailto:cristina.spanimarguet@hcuge.ch)

